



SOCI@LL overcoming the COVID-19 challenges

In the last months, the whole world has been affected by consequences of the pandemic COVID-19. Many activities were cancelled or postponed and those at the centre of our project - schools and municipalities - are dealing with very challenging changes: schools were closed, teachers and school directors had to perform most activities online, students discovered new ways of learning and interacting with their colleagues and teachers, local authorities had to focus in their most vulnerable groups and perform many of their services at distance...among many other changes.

In SOCI@LL we are adjusting the planned activities case by case: In Portugal, the school proceeded with the activities with students, testing the resources at distance; in Poland, the activities with teachers and students will be restarted in the school in September 2020; in Italy, the two schools will proceed with the testing, already initiated, also in September; in Cyprus, the school is exploring the possibility of starting the testing with at distance meetings with teachers in June 2020.

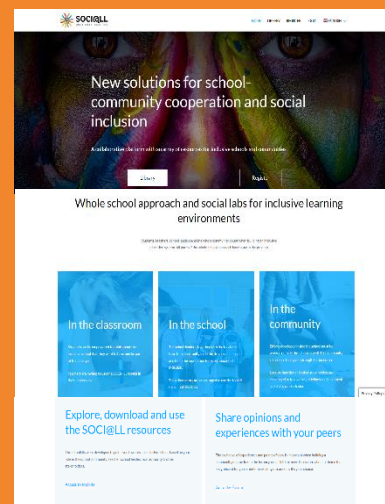
One thing is for sure: the project has not stopped and we are also reinventing ourselves! [Contact us](#) to know more about how SOCI@LL is adjusting its activities.

DISCOVER AND TEST THE SOCI@LL HUB

The online Hub available at www.lab-social.eu with the resources of SOCI@LL is being used more than ever! The three toolkits produced are available in English, Greek, Italian, Polish and Portuguese. They are:

- **Toolkit for school leaders:** with *Guidelines for an inclusive school*, a *Guide to organise SOCI@LL weeks* and support resources with activities to implement with the school community.
- **Toolkit for teachers:** with *Guidelines for inclusive classrooms*, a *Guide for inclusive classrooms* and a *Teachers' dossier*.
- **Toolkit for local authorities:** step-by-step methodology to create social labs, where local actors work together to identify local/regional or national challenges related to social inclusion and inclusive education, addressing the challenges through co-design approaches generating innovative solutions.

When you visit www.lab-social.eu, you can access the materials directly through the [library](#), or you can [register](#) as a teacher, a school director or other stakeholder. Once you register, you will be able to attend the **online courses** available with the materials of the toolkits, use the **self-assessment tools online** and (if you use it with your students) register the progress and perceptions of your students upon using the materials. You can also drop a message in the forum and exchange views with others about the use of the materials.



UPCOMING ACTIVITIES

In the upcoming months, we aim to conclude the testing of SOCI@LL materials for schools and Local Authorities, including the organisation of **Social weeks** in schools and **Social Labs** with local communities. There is also an array of events planned to exchange experiences and good practices about the whole testing process. The major event of the project - **Final Conference** - is planned to take place in Portugal towards the end of the year. We are in permanent contact with our stakeholders to see the most beneficial way to implement these activities. Keep in touch, there will be many news!

Still not sure what SOCI@LL is about? Check our video or [Contact us](#) to find more.



Co-funded by the
Erasmus+ Programme
of the European Union

SOCI@LL has been approved under the EACEA/07/2017 call - Key Action 3: Support for policy reform (Social inclusion through education, training and youth). This project (592254-EPP-1-2017-1-PT-EPPKA3-IP1-SOC-IN) has been funded with support from the European Commission. This document reflects the views only of the author, and the Commission cannot be held responsible for any use which may be made of the information contained therein.